

... / ... // .
: , 2016. – 4 (7). – .: « ».–
. 55-61 (0,6 . .).

316.6

...

... .
... .
... ,
; -
... .
- .
« »
... .
: , , ,
, - .
... .
... .
; -
... .

-

.

« »

.

:

,

,

,

,

-

.

.

,

-

,

,

,

,

.

-

-

,

,

.

,

,

.

.

.

:

(

,

,

,

,

,

.

,

.

,

.

);

(

,

,

,

,

,

.

);

(

,

.

,

,

,

,

,

,

,

);

(

,

.

,

.

,

.

,

,

,

,

,

,

,

.

,

.

).

.

,

.

.

,

.

– 78

84

162

10-

11-

59

16

:

1.

2.

1.

«

» (.) .

2. «

» (.) .

«

» (.) [1]

5 (. 1),

«

», «

», «

–

», «

–

», «

».

» **F1**,

30%

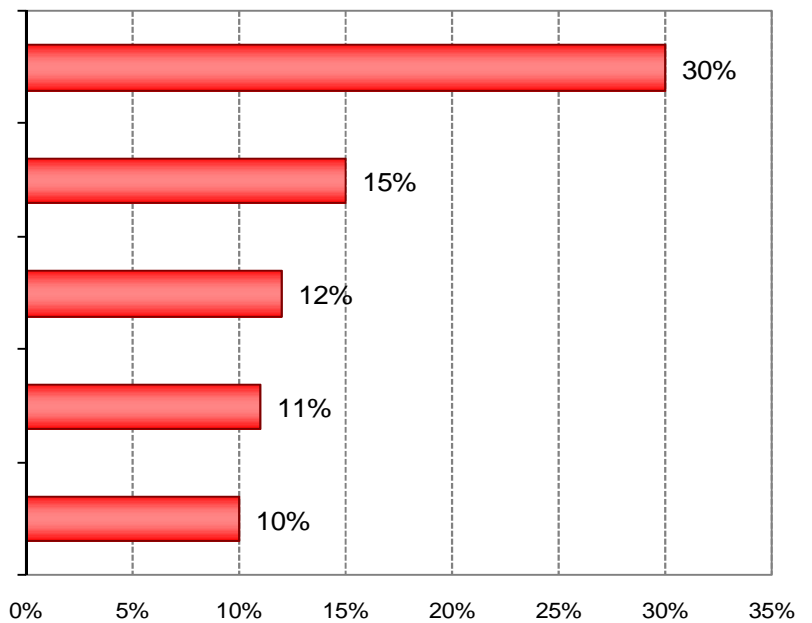
31

(0,64).

«

».

F2 (15%) – 14 .
 « ».
 (0,59), (0,56),
 (0,41).
 , .
F3 14 , 12% .
 « – ».
 , (0,51)
 (0,49
F4, 11% , 11
 . « – », ,
 ,
 (0,58), (0,4).
F5 – 10 , 10% .
 « ».
 (0,53), (0,42).
 ,
 , .



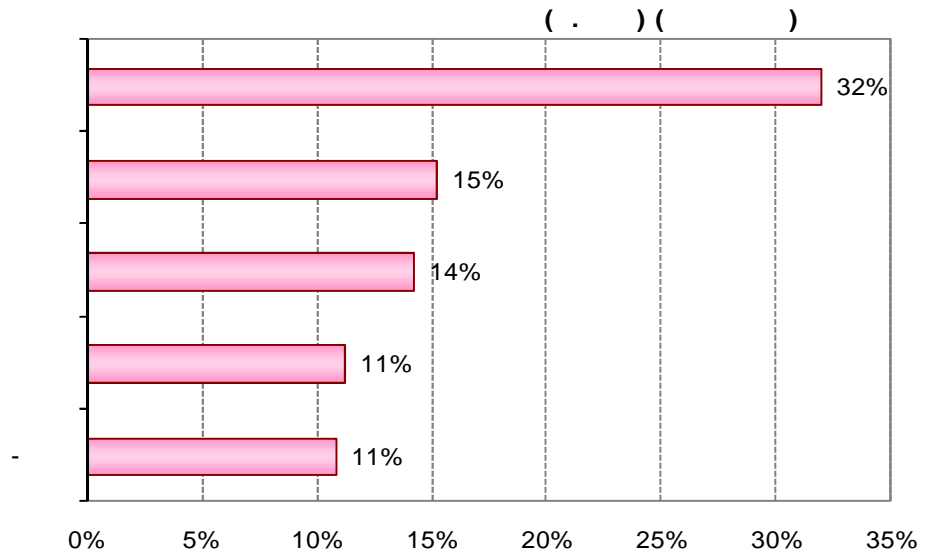
.1.

()

-

.2,

5



.2.

(.)

()

» **F1**, 32%. 21, «

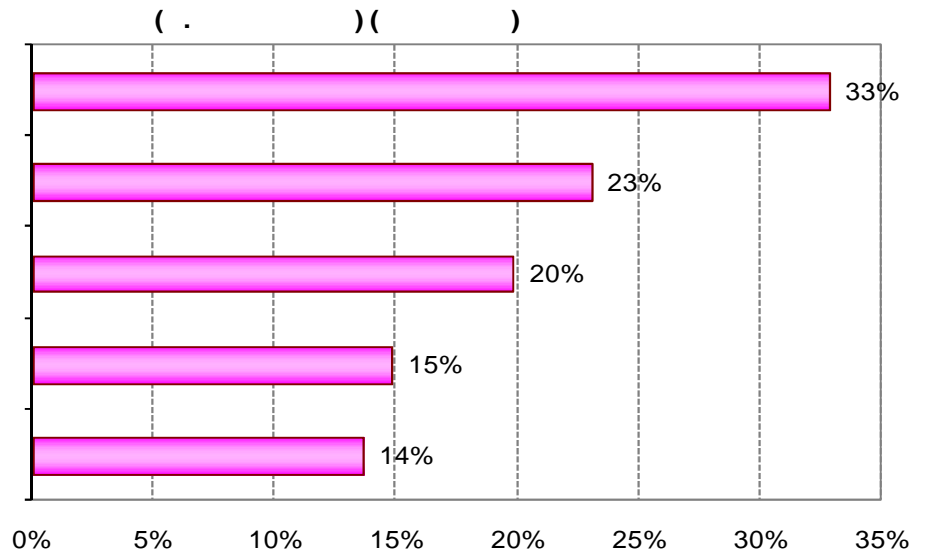
(0,77),
(0,65).

« »,

« » (F4).

. 3,

5



. 3.

(.

)()

« » F1 (- 33%), « - »

F2, (- 23%), « » F3 (- 20%), « » F4

(15%), « - » F5 (14%).

« » (

), « ».

,

,

:

« ».

(.)

[1].

« » (.) [7].

(. 5)

« »

– 59% (« »)

– 31%, « »)

« » –

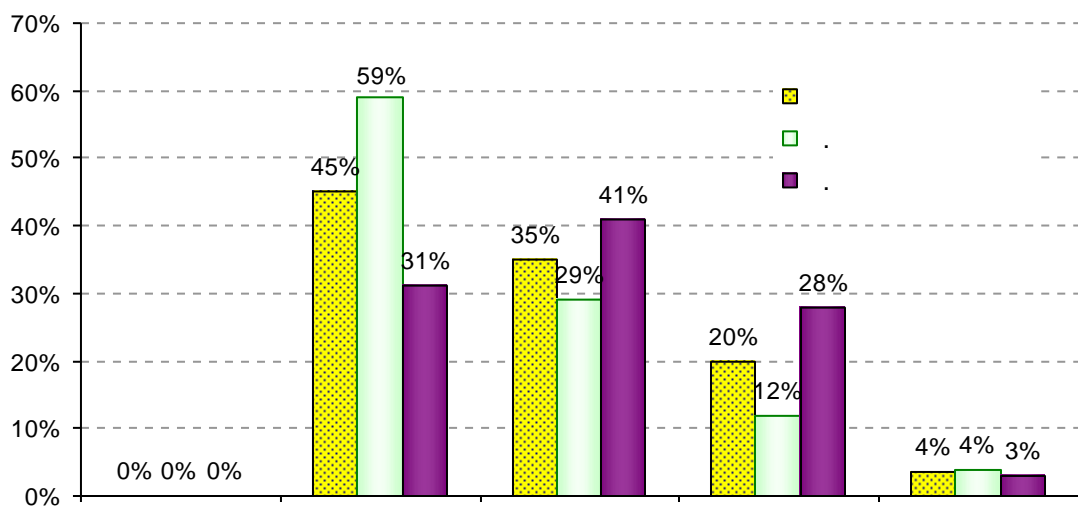
« » –

41%. « » – 29%

« » 12%

28%

« »



.5. « »

« » ,
« » (.). ,
 ,
 , :

« » .
1. « » – ,
 , .
59% . 31%

2. « » – ,
 , .
12% .
28% .

3. « » – , ,
 , .
29% .
41%

•
,
.
,
.
,
e «
».

1. . . . : ... : 19.00.12/ .- , 1999. – 266 .
2. . . . / . . // . . - . , , 2009. – . 56-61.
3. . . . : / . . , . . .- .: . . . - , 2004. – 719 .
4. . . . : . [. . . .]/ . . .- .: . , 2005. – 624 .
5. . . . / . // .-2004.- 2(4).- .18 - 34.

6. / . // .-2004.- 3(5).- .3-21.
7. / . . // : .- : ,2002.- .2.- .93-112.
8. / . . // .-2002.- .15.- .142-145.
9. / .- .: ,2006.- 350 .

Spysok vykorystahyh dzerel

1. Deyjneka O. S. Ehkonomicheskaya psikhologiya v rossiyskoyj politike perekhodnogo perioda : diss... doktora psikholog. nauk : 19.00.12/Oljga Sergeevna Deyjneka. – SPb, 1999. – 266s.
2. Efremova M. V. Osobennosti ehkonomicheskikh ustanovok u shkol'nikov / M. V. Efremova // Trudih mezhd. nauch. internet-konf. Omsk, poligraficheskij centr KAN, 2009. – S. 56-61.
3. Mazaraki A. A. Filosofiya deneg : monografiya /A. A. Mazaraki, V. V. Iljin. – K. : Kievskiyj nac. torg. ehkonom. un-t, 2004. – 719s.
4. Moskalenko V. V. Soc aljna psikholog ya: p druch. [dlya stud. vith. navch. zakl.] / V. V. Moskalenko. – K. : Centr navch. l teraturi, 2005.– 624 s.
5. Moskalenko V. Suchasn napryamki dosl dzhenj v ekonom chn yj psikholog / V. Moskalenko // Soc aljna psikholog ya. –2004.– 2(4). – S.18 - 34.
6. Moskalenko V. Suchasn napryamki dosl dzhenj v ekonom chn yj psikholog / V. Moskalenko // Soc aljna psikholog ya.–2004.– 3 (5).– S. 3-21.
7. Posihpanov O. G. Metodika izucheniya socialjnoyj adaptivnosti lichnosti / O. G. Posihpanov // Sovremennaya psikhologiya : sostoyanie i perspektivih issledovaniya. – M : IP RAN, 2002. – Ch.2. – S. 93-112.

8. Semenov M. Yu. Tipologiya materialjno udovletvorennihkh i materialjno neudovletvorennihkh lyudeyj / M. Yu. Semenov // Omskiyj nauchniyj vestnik. – 2002. – Vihp. 15. – S.142-145.

9. Sidorenko E. Metodih matematcheskoyj obrabotki v psikhologii / E. Sidorenko. – SPb. : Rechj, 2006. – 350s.

Zubiashvili I. K. Research of the psychological peculiarities of senior pupils monetary culture. *In the article, the results of empirical research of the psychological peculiarities of senior pupils' monetary culture are analyzed, different types of attitude to money, their dependence on administrative and territorial factor and factor of sex are considered; social and psychological role of money in the person's monetary culture becoming is emphasized. It is empirically determined that senior pupils' attitude to money is differentiated and achieved a certain level of the cognitive complicity in the everyday consciousness as well as characterized by high affective tenseness appearing in the predominance of the factor "Monetary anxiety" in the structure of attitude to money. It points out a spontaneity of the process of senior pupils' monetary culture formation that influences negatively on that process. For the purpose of analysis of system peculiarities of attitude to money influence on the monetary culture of senior pupils, the empirical research of peculiarities of their psychological and economic adaptability as an indicator of the monetary culture is conducted. Based on correlation between defined peculiarities of attitude to money and "profiles" of social adaptability the levels of senior pupils' monetary culture are determined: indifferent, creative, motivational. The research revealed advantages of the creative type of the monetary culture and necessity of its formation in young generation.*

Keywords: culture, monetary culture, money, attitude to money, economic-psychological adaptation.

. .

.

Irina Zubiashvily, Ph.D., senior scientist, Laboratory of the Organizational and Social Psychology, G.S. Kostiuk Institute of Psychology at the National Academy of Educational Sciences of Ukraine.

E-mail : mrs_ira@i.ua